

P L U T O



Scaled for one or a cozy seat for two people, the Pluto bench is designed to define personal space in public seating environments. The eccentric elliptical form is pleasing to view from any angle and when grouped together, creates intriguing arrangements. Each Pluto bench can be tailored in one, two or three different fabrics. The ballasted base discourages unintended furniture rearrangement. Pluto benches can also be permanently anchored to the floor.

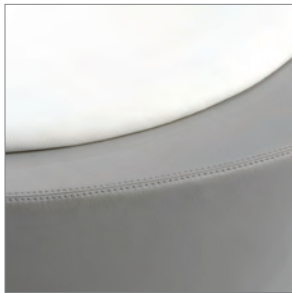


P L U T O

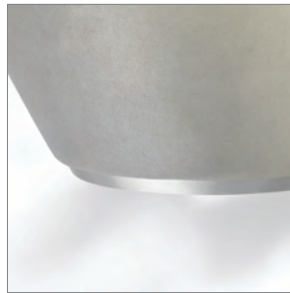
design: Simon Pengelly



w 34 d 37¼ h 16½



Top Stitching Detail



Sterling Plinth

L e l a n d