

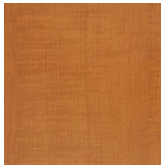
LAMINATES

To simplify your selection, the following laminates are pre-approved standards.

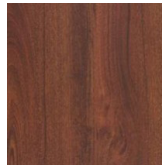
Wood Grain



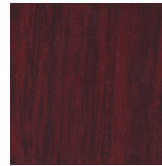
Kensington Maple
Wilsonart®
(10776-60)



Huntington Maple
Wilsonart®
(7929-38)

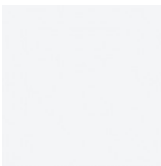


Windsor Mahogany
Wilsonart®
(7039-60)

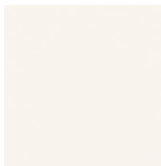


Jewel Mahogany
Pionite®
(WY351)

Solid



Designer White
Wilsonart®
(D354-60)



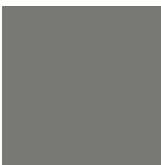
Alabaster
Wilsonart®
(D431-60)



Desert Beige
Formica®
(899-58)



Platinum
Wilsonart®
(D315-60)



Citadel
Formica®
(1097-58)

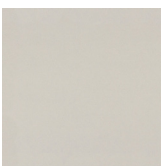


Slate Grey
Wilsonart®
(D91-60)

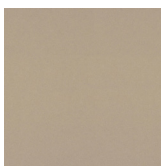


Black
Pionite®
(SE101)

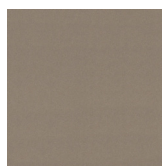
Textured



Shadow Zephyr
Wilsonart®
(4857-60)



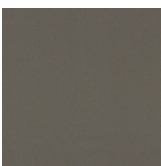
Desert Zephyr
Wilsonart®
(4841-60)



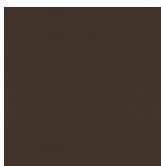
Canyon Zephyr
Wilsonart®
(4842-60)



Misted Zephyr
Wilsonart®
(4843-60)



Twilight Zephyr
Wilsonart®
(4845-60)



Morro Zephyr
Wilsonart®
(4846-60)

Additional standard laminates:

Select from the code list below.

Should your project require a laminate code or supplier not on this list, please contact the Leland Customer Experience Department for assistance to select alternate laminates.

FORMICA [view here](#)

Standard finish

-58 (matte finish) -43 (artisan)

Standard thickness

Grade 12, .035"

Standard selections

Color Portfolio, patterns, wood grains (with exceptions) (10 grade can be ordered special, 20 grade is available in limited colors)

WILSONART [view here](#)

Standard finish

-60 (matte) -38 (fine velvet texture)

Standard thickness

350.40 General Purpose, .050"

Standard selections

solids, patterns and woodgrains (with exceptions)

PIONITE [view here](#)

Standard finish

SD (suede)

Standard thickness:

G48 General Purpose, .048"

Standard selections:

solids, patterns, stones, woodgrains (with exceptions)

Leland tables may be ordered with any laminate recommended for application on horizontal surfaces. For table pricing and lead times using laminates not listed above or laminates from Laminart and Abet Laminati, please contact Leland's Customer Service Department.

Please reference each product spec guide for available finishes and materials as not all options are available on all products.

Due to limitations of the color printing process these finish samples should be considered representative only. For larger finish samples, please contact Leland Customer Experience at (800) 859-7510.